

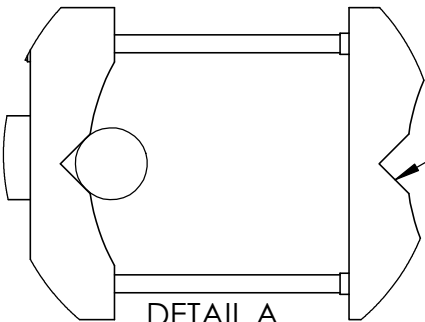
ITEM	PART NO.	DESCRIPTION	QTY.	WEIGHT
1	RRUDSM.01	MOUNTING ARM	2	8.91 LBS
2	RRUDSM.02	CLAMP PLATE	2	2.32 LBS
3	RRUDSM.03	SWIVEL MOUNT	2	6.60 LBS
4	GB03505	3/8-16 UNC X 5" GALV HEX BOLT KIT (GRADE 5)	4	0.18 LBS
5	GD03800	3/8"-16 UNC x 8" Galv Threaded Rod (A307)	8	0.25 LBS
6	GWL03	3/8" GALV LOCK WASHER	18	0.007 LBS
7	GN03	3/8-16 UNC GALV HEX NUT (GRADE 5)	18	0.02 LBS
8	NWFS03.01	3/8" Nylon 6/6 Sleeve Washer	40	0.001 LBS

REVISIONS					
REV.	ECN	ZONE	DESCRIPTION	BY	DATE
A			INITIAL RELEASE	ACG	06/19/14
B			UPDATE DESIGN	ACG	06/26/14
C			UPDATE ITEMS 1 & 2 INCREASE SLOT LENGTH	ACG	07/07/14
D			ADD NYLON WASHERS	ACG	12/06/23
E		B1,D3, C7,C8	REPLACE NYLON WASHERS WITH NYLON SLEEVE WASHERS, REMOVE SS HARDWARE	ACG	07/12/24

Ⓒ

Ⓒ

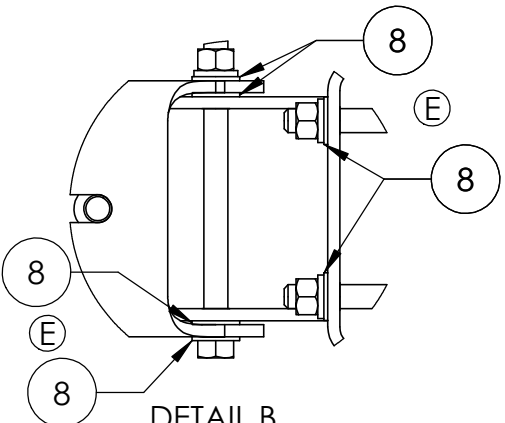
Ⓔ



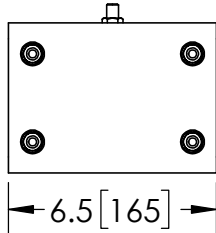
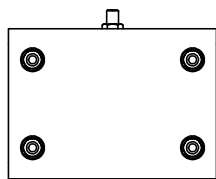
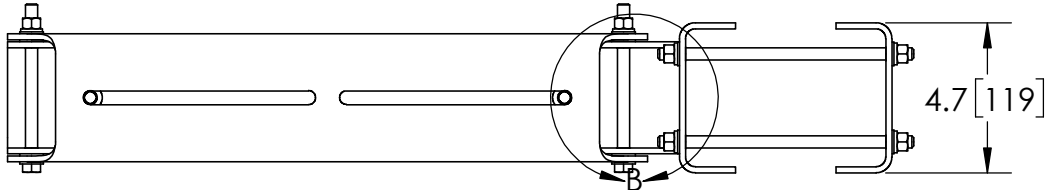
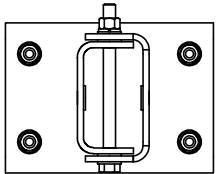
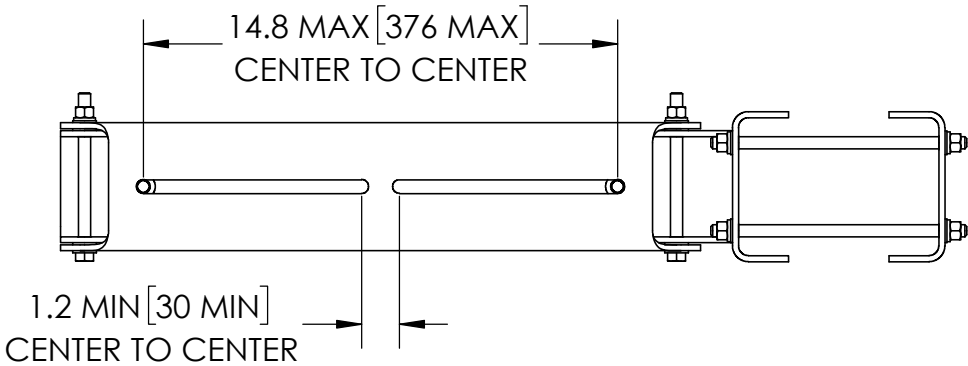
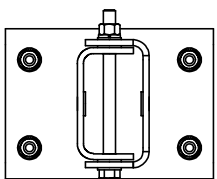
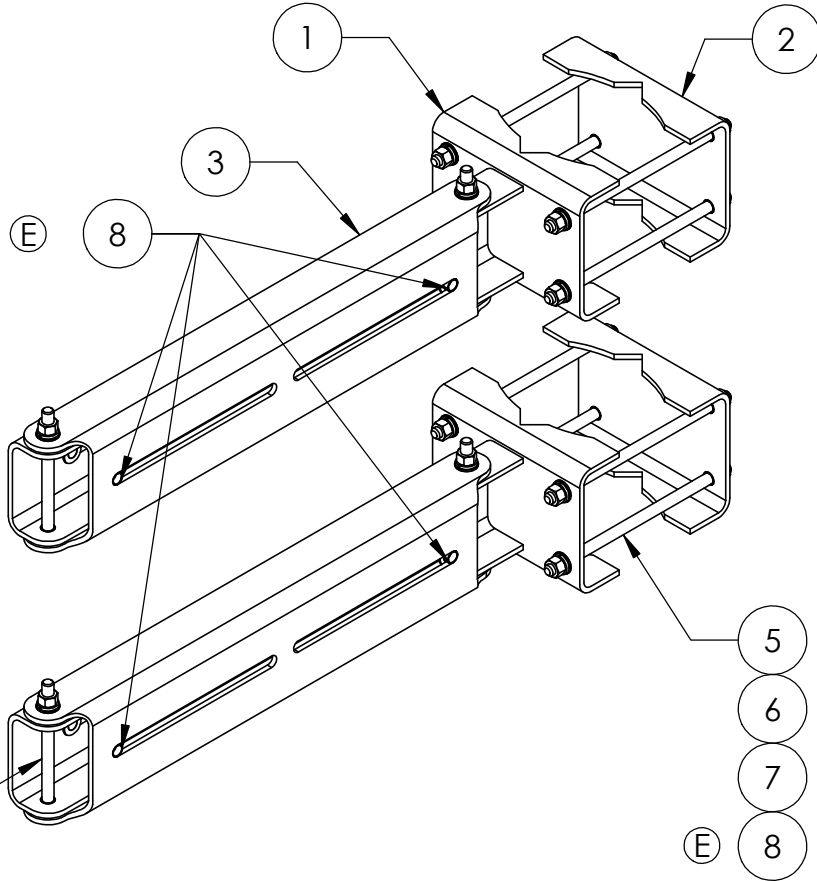
DETAIL A
SCALE 1 : 6

FLIP BRACKET IN
ORDER TO MOUNT TO
SMALLER DIAMETER
SOLID RODS

Ø 4.50 [114.3]
2.38 [60.3] PIPE RANGE
ANGLE MOUNT UP TO 3.0" X 3.0"



DETAIL B
SCALE 1 : 3



- NOTES:
1. ALL METRIC DIMENSIONS ARE IN BRACKETS.
 2. USE NYLON SLEEVE WASHERS UNDER EVERY HEX NUT/LOCK WASHER & BETWEEN MOUNTING ARM & SWIVEL MOUNT.

These drawings and specifications are proprietary property and may be used only for the specific purpose authorized in writing.

ALL DIMENSIONS ARE IN INCHES U.O.S.
TOLERANCES UNLESS OTHERWISE SPECIFIED:
.X = ± .06 ANGLES ±2°
.XX = ± .03 FRACTIONS ±1/32
.XXX = ± .010
REMOVE BURRS AND BREAK EDGES .005

DO NOT SCALE THIS PRINT

DRAWN BY: ACG
CHECKED BY: MKV
DATE: 06/26/14
REVISION: E

SHEET: 1 of 1
SCALE: NTS
MATERIAL: A36
FINISH: Galv A123
WEIGHT: 38.91 LBS

PART NUMBER: FM-RRUDSM
DESCRIPTION: RRU Dual Swivel Mount
DRAWING TYPE: ASSEMBLY DRAWING

